

WTM3300 Beam Saw

Technical Data Brochure



The WoodTech WTM3300 Beam Saw is an ideal cutting machine for medium to large machine shops.

WTM3300 Beam Saw

Technical Specifications

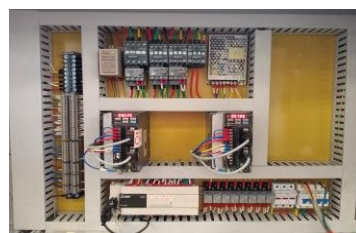
Specification Table

Main Saw			
Spindle rolling speed	4500r/min	Grooving saw blade diameter	Φ180mm
Grooving saw shaft rolling speeding	5600r/min	Grooving saw shaft diameter	Φ30mm
Sawing speed	0-120/min (servo adjustable)	Max. working thickness	82mm
Main saw power	11kW	Max. working width	3250mm
Grooving saw power	1.5kW	Feed guide	Precision linear guide
Feed servo motor power	1.5kW	Main saw blade diameter	Φ350mm
High pressure air supply motor power	2.2kW	Main saw blade shaft diameter	Φ30mm
Overall dimension	6100×6200×1750mm	Table height	920mm

1. Main Structure



2. Electric Control System



WTM3300 Beam Saw

Technical Specifications

3. Operation Interface



4. Servomechanism



5. In-feed Air Flotation Table



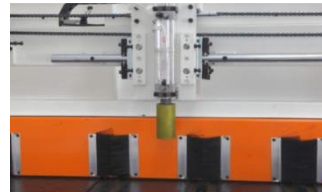
6. Sawing device



7. Feeding Clamp Device



8. Side Learning Device



9. Precision Linear Guide



10. Electronic Ruler Magnetic Induction Device



11. Crawler Type Vacuum System



12. Remote Docking Service System



WoodTech is a company that manufactures specialized machinery primarily in the woodworking and plastics industry.

Historically we have been in business for 23 years and have machinery from our plant working in 20 countries on 5 continents and have distributors in 4 countries. Our product reliability and quality is professed by our customers and distributors. All machinery manufactured by WoodTech from day one are to the best of our knowledge still in active production.

WoodTech entered the CNC market thirteen years ago after a year's development in this area. Our development since then has been ongoing, seeking out the best components and systems to provide on our machines relative to the market segment that we aim those machines at. We believe we have mastered all aspects of CNC router manufacturing in the high performance 3 axis machines. Our top model, the C-Nest Prestige Router, currently performs at 90m/min rapid and 50m/min cutting speed and accelerations of $2,5 \text{ m/sec}^2$ which is among the highest in the industry. WoodTech does design its machines to be fit for purpose and is economical when correctly compared to opposition products.

WoodTech's facilities are of sufficient standard and capability to complete the entire project in house although some specialised work may be decided on to be contracted out. Our managing director is a mechanical engineer and our design engineers are also qualified mechanical and mechatronic engineers.



<https://woodtech.biz>

- Port Elizabeth (Head Office)



134 Kempston Road, Korsten, Port Elizabeth, 6000, South Africa



+27 (0) 41 453 2496



info@woodtech.biz

- Johannesburg



+27 (0) 83 634 4607

WTM

WOODTECH
MECHATRONICS

