

## WTC280/330/380 Beam Saw

Technical Data Brochure



# WTC280/330/380 Beam Saw

Technical Data Brochure

The WTC280/330/380 Beam Saw is ideally suited for high speed cutting of multiple boards at a time.

The machine is ideal for small to medium shop owners.



# WTC280/330/380 Beam Saw

## Technical Specifications

### Specifications Table

Cutting	Max. Cutting Length	2800/3300/3800mm
	Max. Cutting Thickness	90mm
Main Saw	Motor Power	15kW
	Rotating Speed	4500rpm
	Saw Blade Diameter	Ø380 - 400mm
	Saw Blade Inner Diameter	Ø60mm
Scoring Saw	Motor Power	2.2kW
	Rotating Speed	4300rpm
	Saw Blade Diameter	Ø200mm
	Saw Blade Inner Diameter	Ø45mm
Saw Carriage Feed	Motor Power	2kW Servo (Germany)
	Forward Speed	5-90m/min
	Backward Speed	120m/min
Pusher Feed	Automatic Feeding Motor	2kW Servo (Germany)
	Feeding Speed	85m/min
Dust Extraction	Ø150mm x 3, Ø125mm x 2	
Power	Total Power	23kW
Overall Dimensions	Length x Width x Height	WTC280 6800 x 4960 x 1800mm
		WTC330 6800 x 5400 x 1800mm
		WTC380 7400 x 5900 x 1800mm
Air Requirement	0.6 MPa	
Power Supply	3 Phase 380V/50Hz	
Power	Total Power	23kW
Net Weight	5000kg	

*Machine Specifications subject to change.*

*Final specifications for machines ordered are depicted on our quotation sheets and are not necessarily the same as the specifications as shown on this brochure.*

# WTC280/330/380 Beam Saw

## Technical Features

### Frame Work

- The machine body is constructed with high tensile steel. To assure the best finish, all advanced welding is done by robots. The framework undergoes further heat treatment and is then milled to perfection with a 5 axis CNC to ensure quality and durability.



### Saw Carriage

- The saw carriage is driven by a 2kW (German) servo motor through precision rack and pinion to ensure precise cutting. With a max cutting speed of 90m/min and a rapid speed up to 120m/min.
- Both the main saw and scoring saw move up and down independently. The main saw automatically adjusts itself to the component thickness, minimizing the lifting height for efficiency. The machine uses German guide rails for improved stability.
- Quickly change the main and scorer blades with an efficient operator friendly design.



# WTC280/330/380 Beam Saw

## Technical Features

### Saw Carriage Driver

- Main Saw motor = 15kW running at 4500rpm
- Main blade inner diameter 60mm outer diameter 400mm
- Scoring saw runs at 4300rpm/min
- Scoring blade inner diameter 45mm outer diameter 200mm



### Floating Feed Table

- The floating feed table is fitted with steel balls to reduce scratches on panel and ensures easy movement of full size boards.
- The floating table has a 2.2kW air blower.
- Flow rate: 5.2m<sup>3</sup>/min



# WTC280/330/380 Beam Saw

## Technical Features

### Pressure Beam

- Ensures an even pressure over the whole surface of the panel while doing cross cuts.
- Piano type dust cover provides a completely enclosed blade guard and prevents flying dust and chips.
- The pressure beam runs on a precision rack and pinion on either sides.



### Measuring Device

- The panel thickness is measured automatically which in turn automatically adjusts the beam height to ensure the correct pressure.

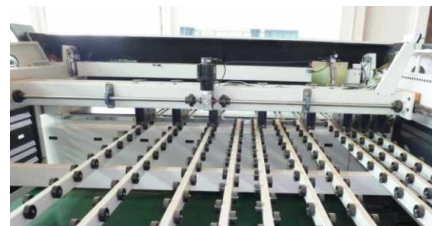


# WTC280/330/380 Beam Saw

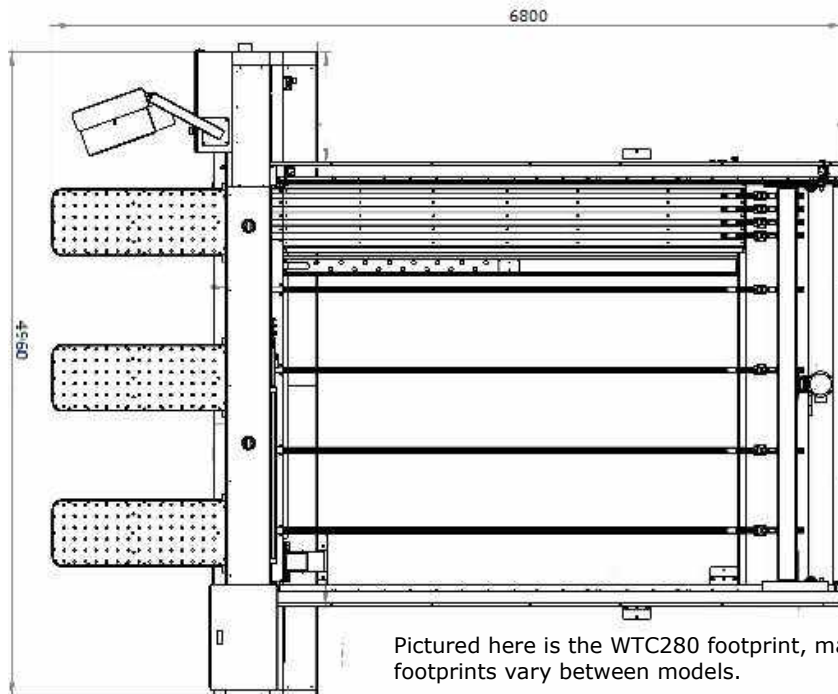
## Technical Features

### Pusher

- 7 grippers (WTC280), 8 grippers (WTC330), 9 grippers (WTC380)
- Pneumatic clamping for best feeding performance.
- Accurate and smooth movement and feeding with a 2kW (German) Servo motor with long precision rack and pinions on both sides.



### Machine Footprint (Overall Size)



Pictured here is the WTC280 footprint, machine footprints vary between models.

# WTC280/330/380 Beam Saw

## Technical Features

### Hand Protector

- A safety device is mounted on the pressure beam for operator protection.



### Side Alignment

- When performing a cross cut, one roller (2 in total) automatically holds the work piece tightly in place to ensure high cutting accuracy.





# WTC280/330/380 Beam Saw

## Technical Features

### Dust Extraction

- 3 dust extraction points below the working table to ensure maximum dust extraction.



### Machine Control

- User-friendly HMI coordinated with USB interface, network card, mouse and keyboard for easy operation.

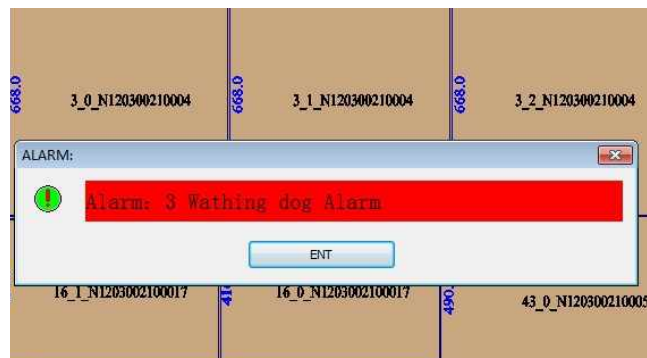


# WTC280/330/380 Beam Saw

## Technical Features

### Error Display

- The alarm displays an error code with a description informing the operator what the course of action is for rapid improvement of work efficiency.



### Optimizing Software

- Professional optimizing software for high handling efficiency and convenient operation equipped within machine
- Off-cut management



# WTC280/330/380 Beam Saw

## Technical Features

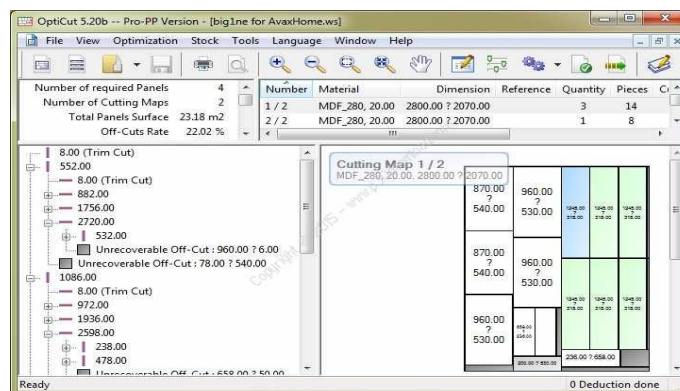
### Operational Software

- Powerful software, user friendly, including managing the work process with detailed reports as well as simulating cutting patterns.
- Additional re-work function for any particular piece (scanner optional), solving the problem of possible setting mistakes and occasional errors caused by the operator.



### OptiCut Pro PP Software (OPTIONAL)

- OptiCut Pro PP software is an advanced option available to meet various requirements. This option is recommended.



# WTC280/330/380 Beam Saw

## Technical Features

### Automatic Lubrication System

- The automatic lubrication system ensures smooth operation and easy maintenance.



### Electrical Cabinet/Box

- All electrical components are recognized high quality international brands which are readily available.



# WoodTech Mechatronics

## Strategic Qualifications

WoodTech is a company that manufactures specialized machinery primarily in the woodworking and plastics industry.

Historically we have been in business for 20 years and have machinery from our plant working in 20 countries on 5 continents and have distributors in 4 countries. Our product reliability and quality is professed by our customers and distributors. All machinery manufactured by WoodTech from day one are to the best of our knowledge still in active production.

WoodTech entered the CNC market thirteen years ago after a year's development in this area. Our development since then has been ongoing, seeking out the best components and systems to provide on our machines relative to the market segment that we aim those machines at. We believe we have mastered all aspects of CNC router manufacturing in the high performance 3 axis machines.

Our top model, the C-Nest Prestige Router, currently performs at 90m/min rapid and 50m/min cutting speed and accelerations of 2,5 m\sec<sup>2</sup> which is among the highest in the industry. WoodTech does design its machines to be fit for purpose and is economical when correctly compared to opposition products.

WoodTech's facilities are of sufficient standard and capability to complete the entire project in house although some specialised work may be decided on to be contracted out. Our managing director is a mechanical engineer and our design engineers are also qualified mechanical and mechatronic engineers.

 woodtech.biz


- Port Elizabeth (Head Office)

 134 Kempston Rd, Port Elizabeth, 6020, South Africa

 +27 (0) 41 453 2496

 info@woodtech.biz

- Johannesburg

 +27 (0) 83 634 4607

**WTM**

**WOODTECH**  
MECHATRONICS

