

BETA 450 EDGEBANDER

Technical Data Brochure



BETA 450 EDGE BANDER

Technical Data Brochure

The Beta 450 edgebander is the ideal edgebander for medium to large factories producing high volumes of Cut & Edge. The machine edges between 12 -24m/min.

Functions on the machine include the following: Touchscreen, pre-milling, gluing, snipping, end trimming, rough trimming, fine trimming, scraping and buffing.

The machine can be upgraded to function as an EVA or PUR granules edgebander.

The following upgrades are also available:-

1. Pre-melt System (request for PUR)
2. Quick Release Glue Pot (pre-melt system required)
3. Release and Cleaning Spray Units
4. Stand Alone Cleaning/Heating Station

The machine is 6,150mm long.



BETA 450 EDGE BANDER

Technical Specifications

Specification Table

Panel Length	>=120mm
Panel Width	>=40mm
Min. Panel Size	120x40mm
Dust Collector	Ø125mmx4
Panel Thickness	10-60mm
Edge Tape Thickness	0.4-3mm
Feeding Speed	12-24 m/min
Control Mode	Travel Switch
Display Screen	Touch Screen 10" Delta
Power Supply	380V; 50Hz
Required Air Pressure	0.7Mpa
Total Power	19.5kW
Net Weight	2400kg
Overall Dimensions	6150x1450x1650mm

Machine Specifications subject to change.

Final specifications for machines ordered are depicted on our quotation sheets and are not necessarily the same as the specifications as shown on this brochure.

Further Features:

- Pre-Milling
- Gluing
- Snipping
- End Trimming
- Rough Trimming
- Fine Trimming
- Scraping
- Buffing

BETA 450 EDGEBANDER

Technical Features

Machine Body

- The steel plate of the mainframe is processed by advanced CNC milling machines for rigidity and a longer service life.



Pressure Beam

- Aluminum pressure beam provides precision and excellent rigidity.
- The position of the pressure beam is available at a glance by using a digital display meter for rapid adjusting and resetting.
- The up and down pressure beam is electrically driven for accurate positioning.
- Limit position detection reduces possible errors.

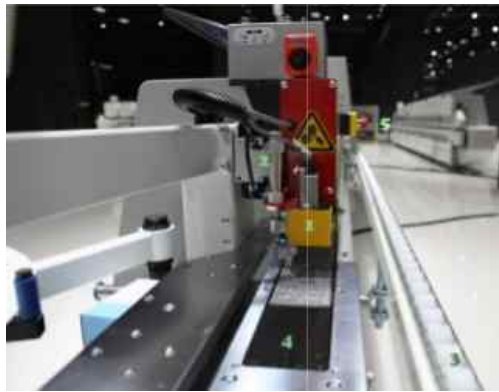


BETA 450 EDGEBANDER

Technical Features

Feeding Unit

- **Interval feeding detection system** – designed for controlling the processing distance to enhance productivity.
- **A safety protection device** prevents any possible accidents and ensures safe operation for the operators, automatic monitoring of abnormal operation.
- **Panel support frame** with guiding rollers for the smooth flow of long panels.
- **Sheet rubber** for operator safety.
- **Emergency stop button**



Conveyor

- The wearproof conveyor is coupled with rubber pinch rollers to ensure smooth panel transmission.
- Allows for variable starting frequencies.
- Equipped with breaking system.
- Speed can be adjusted: 16m/min, 20m/min, 24m/min

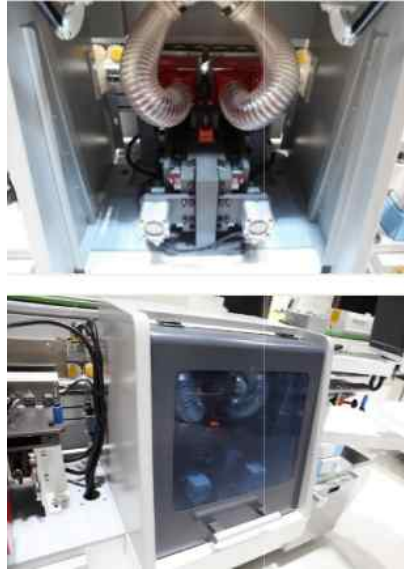


BETA 450 EDGEBANDER

Technical Features

Pre-Milling Unit

- Pre-milling unit for deburring.
- Milling cutter adopted diamond cutter (Standard: Ø120x35mm; Optional: Ø120x65mm)
- Two Motors Controlled by Air Cylinder:
 - 2 x 3.7kW Motors
 - Rotating Speed: 12000 rpm
- 360° Dust Cover



Pre-Heating Device

- Pre-heating before gluing forms optimum basis of a high standard of gluing.



BETA 450 EDGEBANDER

Technical Features

Gluing

- Glue belt loading device with the knurled pin wheel structure increases friction, making edge tape feeding smoother.
- Teflon coated glue pot designed for EVA hot melt glue.
- Distance between gluing device and stock guide is controlled within 0.5mm.
- High precision measuring plate for feeding.
- Control sensitivity of up to 0.5mm.



Pressure Rollers

- One pressure roller and four post rollers allow the edge tape to be applied firmly.
- Suitable for the application of various edge tape thicknesses.
- One pre-pressure roller and four post rollers for high quality products.
- Edge tape thicknesses can be adjusted.



BETA 450 EDGEBANDER

Technical Features

End Trimming Unit

- Linear guideway structure at a 45 degree angle.
- 2 Motors; Power 0.37kW; Frequency 200hz, Rotating Speed of 12000rpm.
- Manual rotating device for angle adjustment.
- 2 x Saw Webs
- Independent Dust Cover.



Rough Trimming Unit

- Two Motors; Power 0.75kW; Frequency 200hz; Rotating Speed 12000rpm, used to trim excess edge.
- Adjustable angle 0-5°
- 2 Milling Cutters
- Independent Dust Extraction

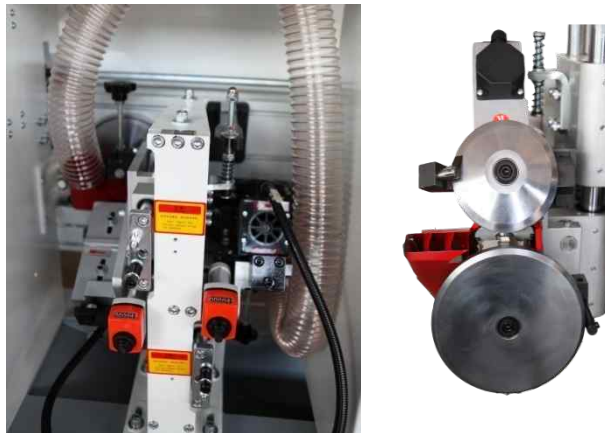


BETA 450 EDGEBANDER

Technical Features

Fine Trimming Unit

- 2 Motors; Power 0.5kW; Frequency 200hz; Rotating Speed of 12000rpm.
- 2 Fine Trimming Milling Cutters (Standard: R2)
- Independent Suction Hood



Scraping Unit

- Standard R2 cutters used for scraping.
- Digital display meter for quick adjusting and resetting.



BETA 450 EDGEBANDER

Technical Features

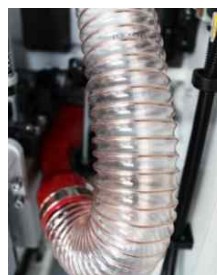
Buffing Unit

- Dual screen cloth structure to polish top and bottom edges.
- Digital display meter for quick adjusting and resetting.



Dust Extraction

- All suction hoods are fully covered, each unit equipped with an independent suction hood.
 - Pre-milling x1
 - Rough Trimming x1
 - Fine Trimming x1
 - Scrapping x1
- Cleaning Brush
- Air Cleaning System



BETA 450 EDGEBANDER

Technical Features

Switch

- Emergency Stop
- Main switch for controlling machine operation.



Operation Indicating Light

- The operation status of the machine is available at a glance.



BETA 450 EDGEBANDER

Technical Features

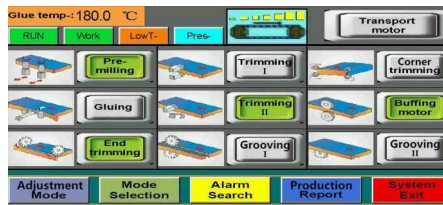
Motor for Drag Chain

- Conveying motor allows for variable starting frequencies.
- Equipped with a braking system.
- Easy to disassemble.



Operating System

- 7" touch screen



Electric Cabinet



WoodTech Mechatronics

Strategic Qualifications

WoodTech is a company that manufactures specialized machinery primarily in the woodworking and plastics industry.

Historically we have been in business for 20 years and have machinery from our plant working in 20 countries on 5 continents and have distributors in 4 countries. Our product reliability and quality is professed by our customers and distributors. All machinery manufactured by WoodTech from day one are to the best of our knowledge still in active production.

WoodTech entered the CNC market thirteen years ago after a year's development in this area. Our development since then has been ongoing, seeking out the best components and systems to provide on our machines relative to the market segment that we aim those machines at. We believe we have mastered all aspects of CNC router manufacturing in the high performance 3 axis machines. Our top model, the C-Nest Prestige Router, currently performs at 90m/min rapid and 50m/min cutting speed and accelerations of $2,5 \text{ m/sec}^2$ which is among the highest in the industry. WoodTech does design its machines to be fit for purpose and is economical when correctly compared to opposition products.

WoodTech's facilities are of sufficient standard and capability to complete the entire project in house although some specialised work may be decided on to be contracted out. Our managing director is a mechanical engineer and our design engineers are also qualified mechanical and mechatronic engineers.

 <https://woodtech.biz>


- Port Elizabeth (Head Office)

 134 Kempston Road, Korsten, Port Elizabeth, 6000, South Africa

 +27 (0) 41 453 2496

 info@woodtech.biz

- Johannesburg

 +27 (0) 83 634 4607

WTM

WOODTECH
MECHATRONICS

